



# ESCAPING ADULTHOOD

MARCELA BERNAL - ARTH314

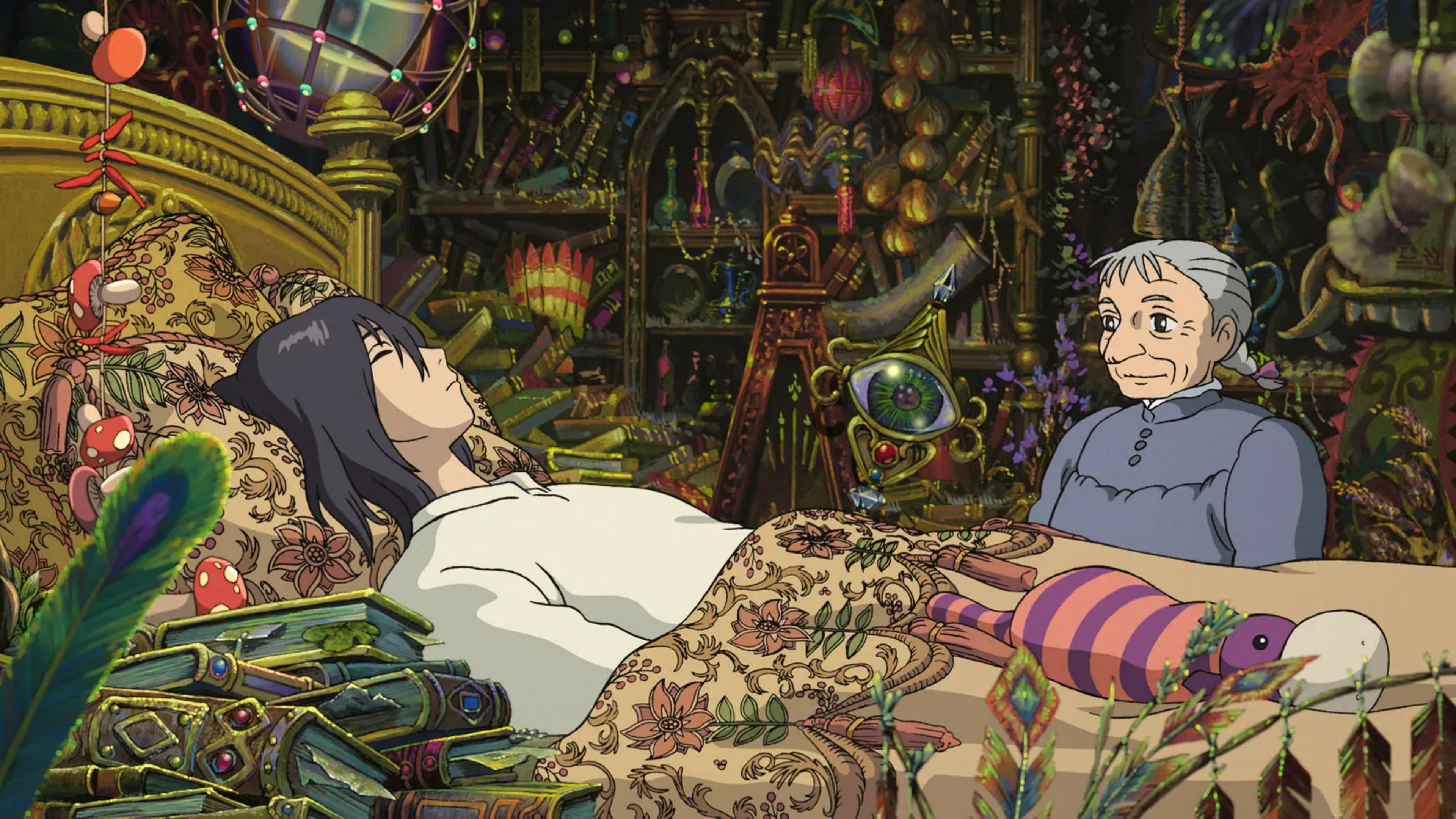
ARTWORK 1

HOWL'S MOVING CASTLE

Hayao Miyazaki, *Howl's Moving Castle*,

2004, 1920x1080 px, Film







ARTWORK 2  
TOMORROW X TOGETHER

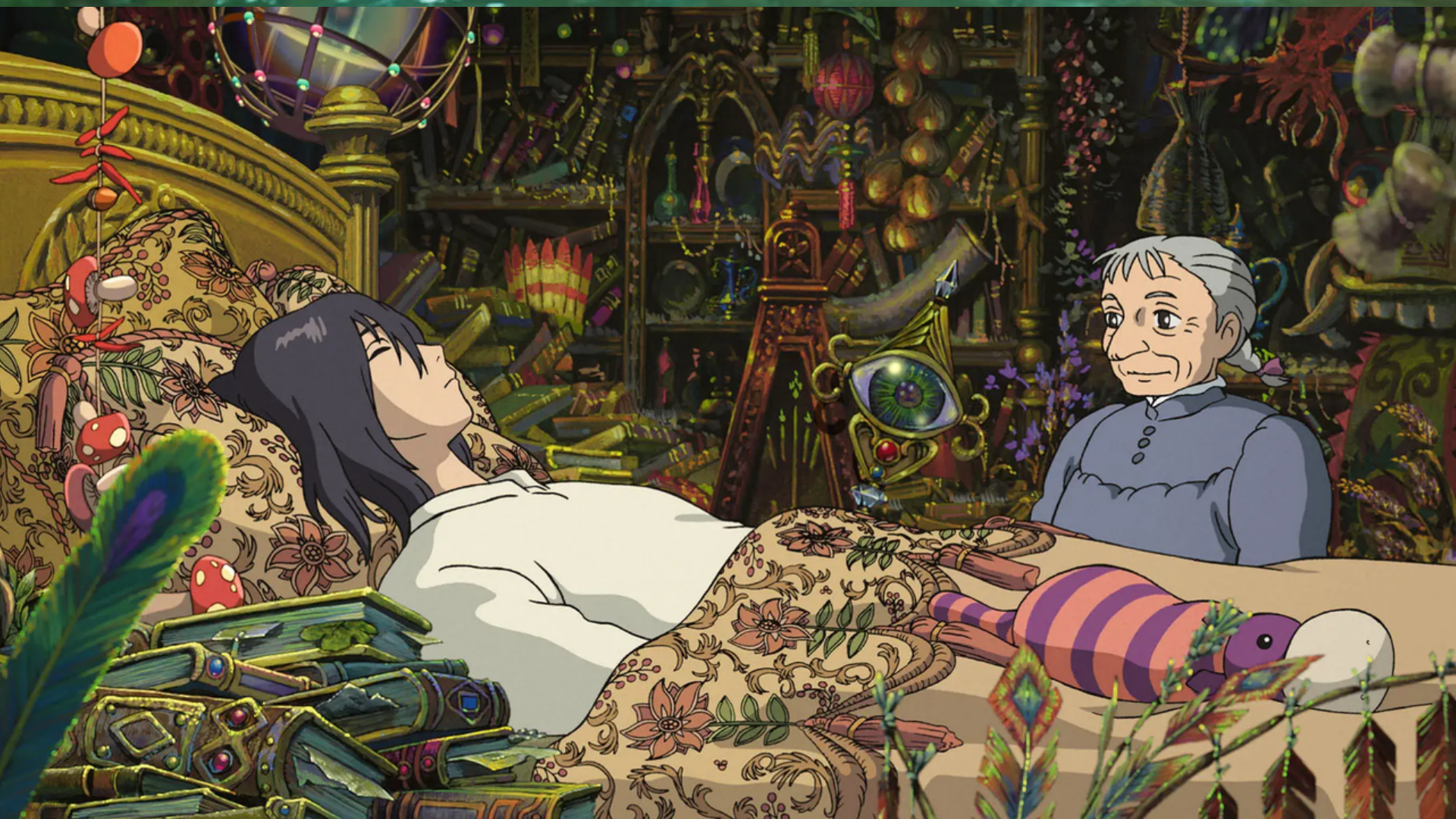
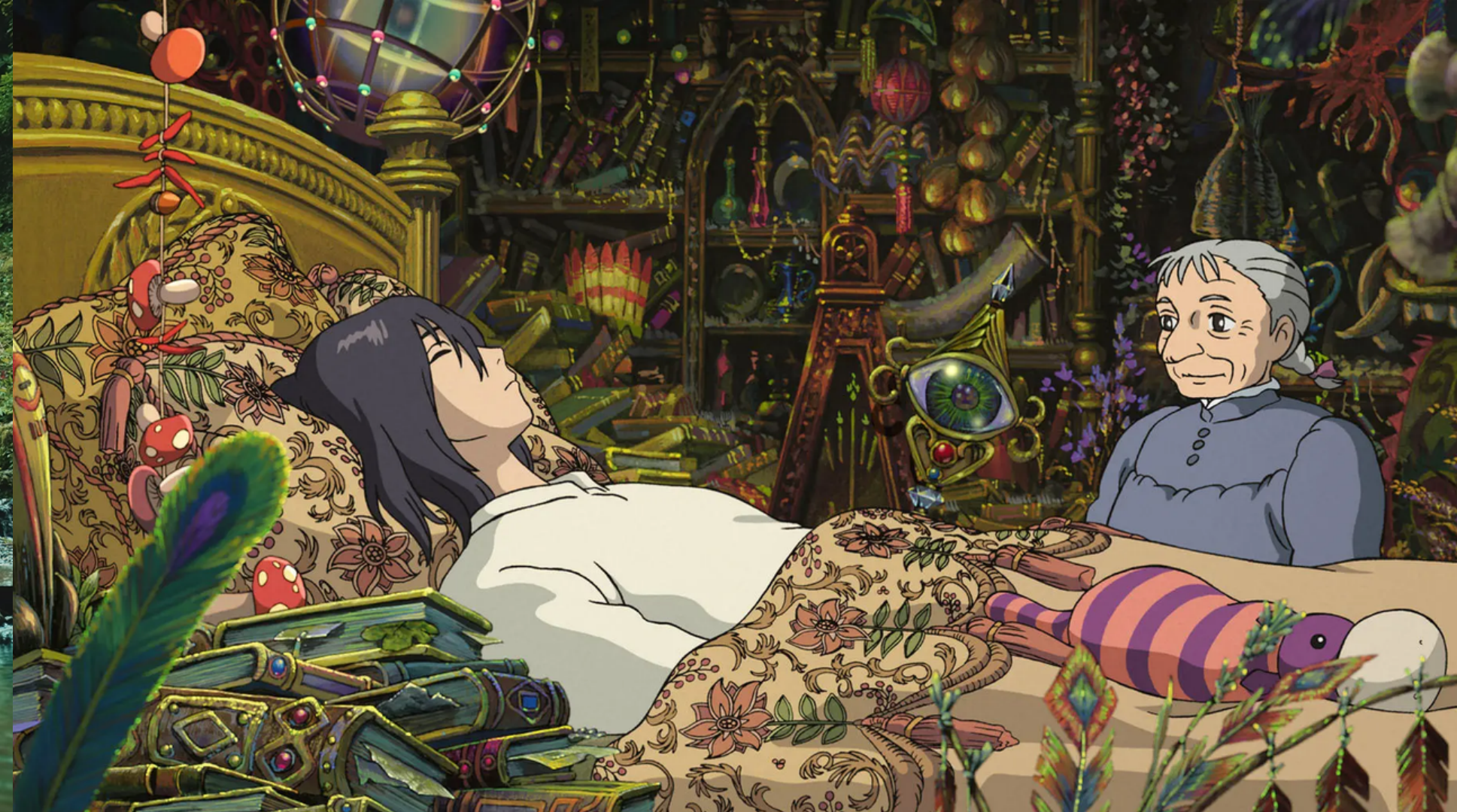
TOMORROW X TOGETHER, *Sugar Rush*

*Ride*, 2023, 1920x1080 px, Music Video





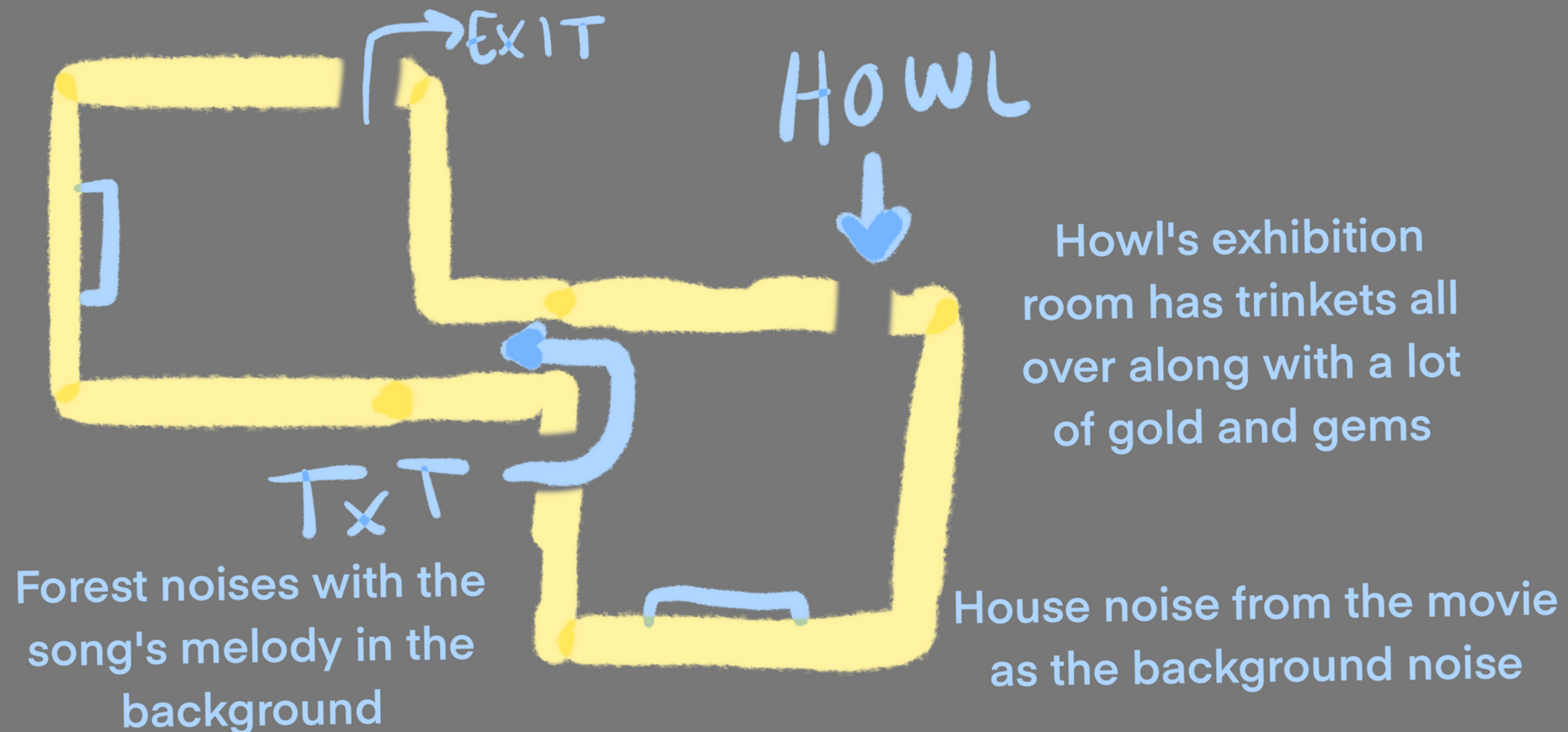






txt's exhibition room  
has water contained in  
glass as if the viewers  
were inside the painting

preferably for the audience to go through  
the howl room first to show the struggles  
of growing up Then the txt room trying to  
lure the viewers in, only for them to leave  
the room (magic island) and grow up





A LOT of trinkets  
to make viewers  
feel trapped like  
howl did for  
many years

velvet carpet  
leading to  
the piece





foliage +  
nature smell  
to transport  
viewers



water floor  
contained  
in glass